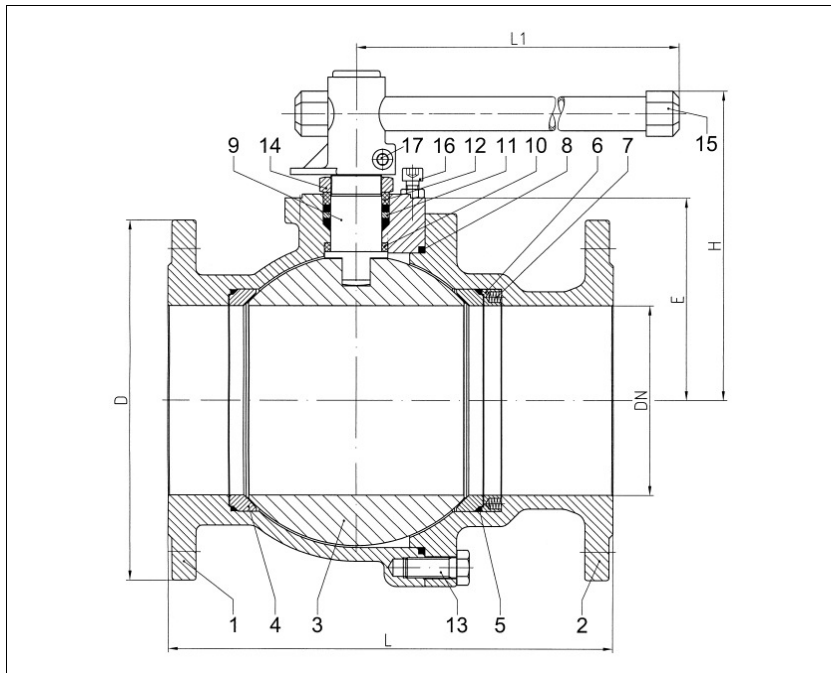


BALL VALVES INTEC

K221, DN125 - DN200, PN10/16
with floating ball, metal seated,
single side spring loaded seat ring



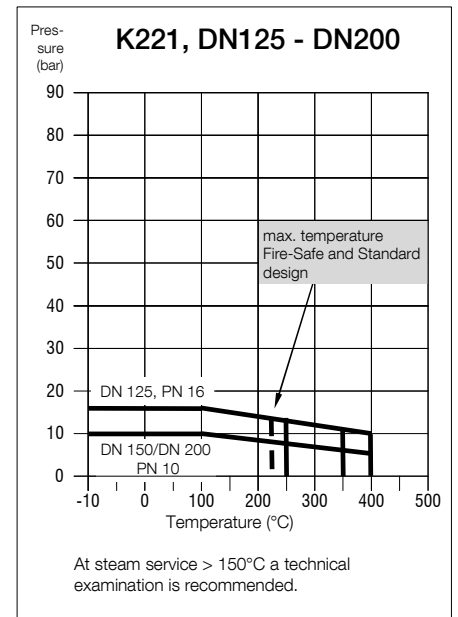
Flanged ball valve
full bore
face to face acc. to EN 558, GR. 27
flanges acc. to EN 1092

Specification:

Two-piece ball valve with flanges acc. to EN 1092, face to face dimensions acc. to EN 558, GR.27, full bore, blow-out-proof stem, body material stainless steel (1.4408) or carbon steel (1.0619), anti-static device, free of non ferrous metals, seat 1.4571/1.4404 hard facing metal coated, stem packing cone ring construction acc. to temperature use, dynamic loaded adjustable, single side spring loaded seat ring, top flange DIN EN ISO 5211, approved by PED, certified acc. to GERMAN clean air act VDI 2440, Fire-Safe acc. to DIN EN ISO 10497, with lever.

Marking: INTEC K221

No.	Part	Material	Material
High temperature design			
1	body	1.0619	1.4408
2	cap	1.0619	1.4408
3	ball	1.4408 hard facing metal coated	
4	seat	1.4571/1.4404 hard facing metal coated	
5	seat seal	Graphite	
6	follower ring	1.4571/1.4404/1.4408	
7	spiral spring	Inconel X750	
8	body seal	Graphite	
9	stem	< 250°C 1.4462	350°C 1.4313
		400°C 1.4980	< 250°C 1.4462
		350°C 1.4980	400°C 1.4980
10	below seal	E-carbon	
11	upper seal	1.4571/1.4404/Graphite	
12	bearing	E-carbon	
13	hex. screw	A4-70	
14	hex. nut self-locking	A2/1.4301	
15	lever	1.4408/1.4308/steel zincplated	
16	stopper	A2	
17	allen screw	A2-70	
Fire-Safe design			
8	combined body seal	KF-Graphite	
10	below seal	KFGN/Graphite	
11	upper seal	KFAM/Graphite	
12	Fire-Safe seal	Graphite	
	ring	1.4571/1.4404	
	thrust washer	PEEK	
Standard design			
5	seat seal	KF	
8	body seal	KF	
10	below seal	KFGN/Graphite	
11	upper seal	KFAM/Graphite	
12	bearing	PEEK	



Ordering example:
INTEC K221, DN150, PN10, GR. 27, 1.4408,
high temperature, 1.4980 (stem)

* Necessary torque measured with treated water at Δ P acc. to pressure class and room temperature.

** gearbox recommended.

PN16/PN40 flange connection on request.

Dimensions

DN mm	PN	dimensions (mm)					top flange ISO	torque Nm*	weight kg
		H	L1	L	D	E			
125	16	263	700	325	250	164	F12	722**	56
150	10	265	700	350	285	160	F12	743**	80
200	10	340	1000	400	340	225	F14	1602**	152